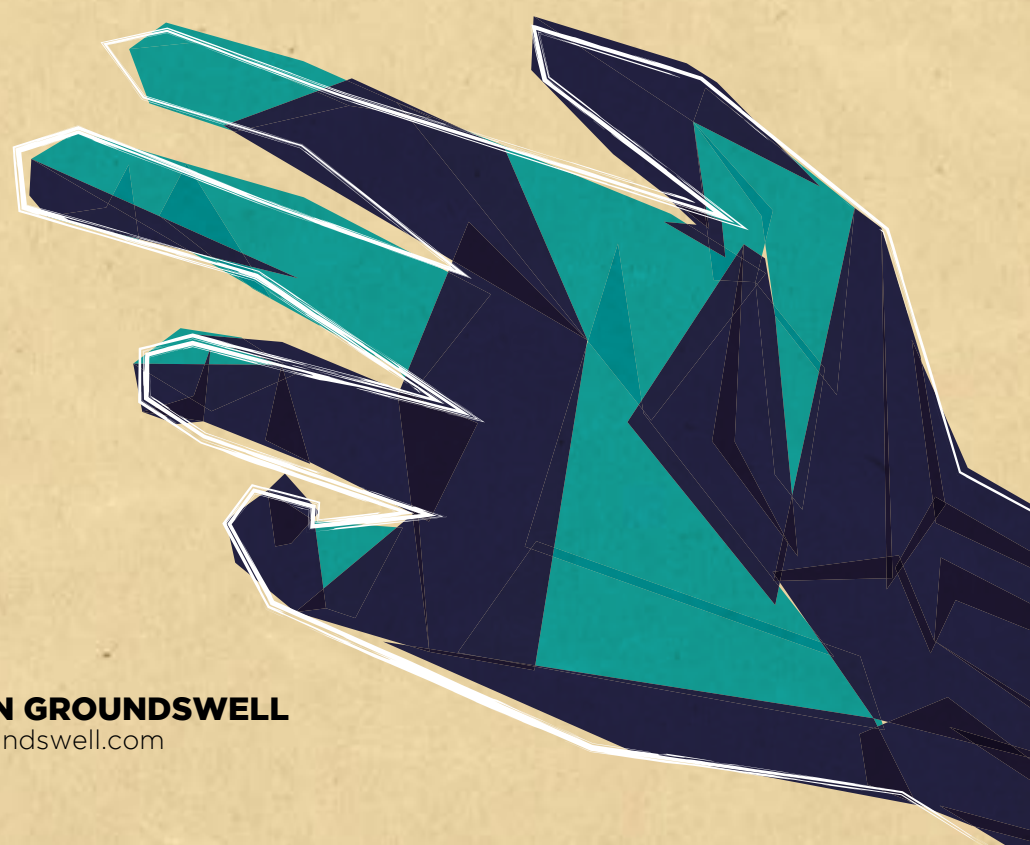




OPERATION GROUNDSWELL'S
PARTNERSHIP
REPORT 2014



BACKPACKING
with a
PURPOSE

OPERATION GROUNDSWELL
operationgroundswell.com



WE'RE SPARKING A MOVEMENT OF GLOBALLY ACTIVE & SOCIALY CONSCIOUS BACKPACKTIVISTS.

CONTENTS

- 3 A LETTER FROM THE OGHQ
- 4 EAST AFRICA: DISCOVERY
- 7 EAST AFRICA: YOUTH IN ACTION
- 9 GUATEMALA: FAIR TRADE
- 13 GUATEMALA: EXTREME
- 15 INDIA: GENDER AND RELIGION
- 19 INDIA: HIGH ALTITUDE EDUCATION
- 20 MIDDLE EAST: BEHIND THE HEADLINES
- 24 PERU: AMAZON ADVENTURE
- 27 PERU: MIND AND BODY
- 29 SOUTHEAST ASIA: ANIMAL CONSERVATION
- 32 SOUTHEAST ASIA: CITIES AND SANCTUARIES
- 35 WEST AFRICA: GRASSROOTS EDUCATION
- 38 WEST AFRICA: GLOBAL HEALTH
- 42 THE PROJECT FUND

OPERATION GROUNDSWELL PARTNERSHIP PACKAGE 2014



A LETTER FROM OGHQ

It has been nine years since we first set out carrying our backpacks and our intentions to do good, and in those nine years of adventure we have done a lot of growing. This summer we guided 199 backpacktivists across seven different regions of the world, on 22 summer programs; and we are proud to share the accomplishments of these teams and their leaders.

After the hard work of all our dedicated backpacktivists, and the generosity of their respective communities this year's fundraising efforts amounted to a total of \$138,143.54 (CAD). These funds were thoughtfully used and distributed by our summer teams in their engagement of communities and NGOs all over the world.

This summer backpacktivists engaged in mutually beneficial and reciprocal partnerships across the globe. They learnt, connected, and gave back with humility, respect, and solidarity. We hope that this report reflects the extensive thinking and discussions that went into every contribution. Whether through an adventurer's changed perspective, a partner's new project, or a donor's widened view, we are using our relationships to create positive impacts at home, on our programs, and in the communities we visit.

As backpacktivists we are constantly striving to reflect and adapt, to stretch our limits, and thirst for more. You will find this expressed in this year's report, as we detail and identify our opportunities for growth. This year was full of successes, but we also faced our share of challenges. Our project fund was not as significant as we had hoped, with our teams contributing \$12,146.40 towards our Alumni Project Fund. We are seeking new ways of encouraging our backpacktivists to give more towards supporting these impactful and empowering initiatives. You will also find a new "Space for Growth" heading in this year's report, in which we describe the challenges of each partnership, and suggest ways of moving forward. This is our way of being transparent,

admitting our failures, and continuing to use all of our experiences as learning opportunities.

To all our donors, supporters, and advocates, thank you. Whether you contributed by making a donation, referring a friend, or sharing our values, each of you have played a role in the successes we have outlined in this report. For your generous offerings and unwavering support we are extremely grateful.

We must also acknowledge the determination, thoughtfulness, humility, and sweat of the backpacktivists and their fearless leaders. Not only did they implement the projects and connect with our partners, the adventurers' journeys began when they reached out to their networks and raised money for the cause. Our strong partnerships and community impacts are evidence of all your hard work, so thank you.

Above all we are thankful for our partner communities' and NGOs' hospitality and generosity in welcoming us into their homes and continuing to inspire and teach us. Our partners are at the heart of everything we do at OG, and we are driven by their perseverance and compassion.

In honour of these people, for whom we are exceedingly grateful, we continue to strive to improve our operations and programs. This document outlines both our successes and challenges, and is centered on the relationships we have developed this past year on our backpackivist mission.

Sincerely,

The OG Crew





EAST AFRICA: DISCOVERY

PARTNERSHIPS

RESCUING WIDOWS, ELDERLY, YOUTH, AND ORPHANS WITH AIDS (RWEYOWA)

RWEYOWA is a non-governmental organization seeking to curb the spread of HIV/AIDS and improve the living conditions of those affected by and infected with HIV/AIDS in the Wakiso and Kampala Districts in Uganda.

LOCATION

Namasuba, Kampala, Uganda

GOALS

The early summer team aimed to expand the RWEYOWA Family Empowerment and Economic Development (FEED) Project to a further ten families in the community and provide each family with a chicken coop and ten chickens. The late summer team sought to work with RWEYOWA to organize HIV Testing Outreach.

WHY

People living with HIV/AIDS and their loved ones face challenges beyond their physical health, including challenges with their livelihoods and mental health. By partnering with RWEYOWA OG was able to help with much needed efforts to improve the standard of living of individuals affected by HIV/AIDS in the regions of Uganda most impacted by HIV/AIDS. The late summer team's HIV testing and outreach project was created in an effort to reduce the spread of HIV and unwanted pregnancies, as well as to decrease stigma surrounding HIV/AIDS in the community.

IMPACT FOR PARTNER

The early summer team constructed five chicken coops, and the team purchased and distributed 50 chickens to five different families affected by HIV/AIDS. In the construction of chicken coops, the FEED program empowers these families by giving them a sustainable food source, which also serves as an income generating opportunity. The early summer team spent a morning working with the students of St John's Primary school. The early summer team also promised a donation of \$65 to go towards funding a desperately needed operation for a RWEYOWA family member; the late summer team provided the donation. During the HIV

Testing Outreach event the late summer team assisted in testing 400 people for HIV and STI's.

IMPACT ON TEAM

The early summer team constructed five chicken coops, and the team purchased and distributed 50 chickens to five different families affected by HIV/AIDS. In the construction of chicken coops, the FEED program empowers these families by giving them a sustainable food source, which also serves as an income generating opportunity. The early summer team spent a morning working with the students of St John's Primary school. The early summer team also promised a donation of \$65 to go towards funding a desperately needed operation for a RWEYOWA family member; the late summer team provided the donation. During the HIV Testing Outreach event the late summer team assisted in testing 400 people for HIV and STI's.

SPACE FOR GROWTH

The early summer team felt as though they could have been better prepared to lead the classes at St John's Primary school. In the future, if we don't feel confident in our ability to lead classes due to a lack of training, we should look for other ways of engaging with the community. The late summer team also felt that they could have used more in depth training on HIV/AIDS. In the future we should make sure that our teams are well prepared and trained before the projects start.

IN KIND DONATION: \$4036.78

MONETARY DONATION(S): \$65.00

TOTAL: \$4101.78

"THE IMPACT OF COMPLETING OUR FIRST PROJECT WAS BOTH HARD-HITTING AND HUMBLING. DESPITE MEETING A SLEW OF CHALLENGES... WE ROSE TO THE OCCASION AS A UNIT AND IN SOLIDARITY, MEETING THE LOCAL COMMUNITY WITH COMPASSION AND WIDE-OPEN WHOLE HEARTS."

EAST AFRICA: DISCOVERY

CONTINUED...

UNITED YOUTH ENTERTAINMENT (UYE)

UYE is an organization dedicated to making educative films that address social issues, particularly those prevalent in Northern Uganda.

LOCATION

Gulu, Uganda

GOALS

The early summer team aspired to work with the UYE members to organize a Gulu Diaspora Arts Showcase. The late summer team's goal was to help UYE organize a film premier for their recently produced short film 'Crying for Help,' run a community drama workshop, and shoot a short documentary involving UYE members and OG participants.

WHY

UYE is a new organization that is still working to establish itself. To help them make an impact, UYE requested the OG teams work with their members to further develop and strengthen what they do.

IMPACT FOR PARTNER

The Arts Showcase was successful in raising funds for the purchase of additional equipment, was an opportunity for them to present their work to the Gulu community and also helped promote UYE in Uganda. The film premier was also a successful fundraiser; and UYE members gained new writing, acting, and drama skills from the drama workshop. The documentary shooting also provided UYE members with excellent promotional material.

IMPACT ON TEAM

During the Showcase the early summer team was able to interact with the guests and artists, which was a great opportunity for them to appreciate the talents of many local Acholi artists. For both teams, working with and getting to know the local youth through UYE also helped the group explore different perspectives on local issues.

SPACE FOR GROWTH

In the future we are hoping to better prepare our team for the project so that the group can be more involved in the planning and execution of the event. The late summer project was more successful as both UYE members and the OG leaders were more experienced and had a clearer idea of each other's expectations.

DONATIONS IN KIND: \$836.52

TOTAL: \$836.52

KIDS CLUB KAMPALA (KCK)

KCK aims to empower children and women from disadvantaged communities, by supporting their basic needs, and by creating sustainable change through a variety of development projects.

LOCATION

Gayaza Road, Kampala, Uganda and Busika, Kampala, Uganda

GOALS

The early summer team aimed to contribute to the final stages of development of Ewafe's emergency care shelter for abandoned children. The late summer team hoped to build on the early summer team's success and continue the project.

WHY

KCK's Ewafe project intends to address the growing problem of child abandonment in Kampala's slums.

IMPACT FOR PARTNER

The early summer team painted three dormitories, coated doors and windows, inside and out and contributed the materials used in construction and painting. The late summer team finished painting the bathrooms, the dormitories and the outdoor walls, and contributed materials. Both teams worked hard to prepare the dormitories so that they were ready to be moved into that summer.

IMPACT ON TEAM

Before the teams began work on the emergency care centre they had the opportunity to visit some of Kid Club Kampala's other projects, including the women's empowerment project and livestock project. This experience gave participants a deeper understanding of KCK's presence and role in the community.

SPACE FOR GROWTH

Knowing the skills and expertise of group members in advance would allow us to better match their abilities with particular projects. Kids Club Kampala also has many other initiatives such as a music and dance project for children, women's initiatives, and the livestock project, which are potential means of expanding our involvement.

DONATIONS IN KIND: \$4097.53

TOTAL: \$4097.53



EAST AFRICA: DISCOVERY

CONTINUED...



CONTRIBUTIONS

MWELU FOUNDATION

The mission of the Mwelu Foundation is to foster the talents of youth and children in one of the poorest communities of Nairobi by providing training in creative arts such as photography, film production, and journalism.

LOCATION

Mathare Valley slum, Nairobi, Kenya

WHY

The Mwelu Foundation empowers children and youth living in extreme poverty in the Mathare slum by giving them opportunities to express themselves. Although the teams were unable to work extensively with the Mwelu Foundation, the groups visited the organization and wanted to contribute to them financially.

IMPACT FOR PARTNER

The donations given will help the Mwelu Foundation further develop and expand their projects and workshops in the Mathare slum.

MONETARY DONATION(S): \$316.43

TOTAL: \$316.43

DAVID SHELDRIK WILDLIFE TRUST

The David Sheldrick Wildlife Trust is the most successful orphan elephant rescue and rehabilitation program in the world, and one of the pioneering conservation organizations for wildlife and habitat protection in East Africa.

LOCATION

Nairobi, Kenya

WHY

Visiting the Trust was an amazing experience and icebreaker for both teams as they arrived in Nairobi. The late summer team wanted to contribute to the Trust through a donation.

IMPACT FOR PARTNER

The Trust received a financial contribution towards their operations.

MONETARY DONATION(S): \$56.80

TOTAL: \$56.80

“IT WAS AMAZING TO SEE THEIR PASSION FOR THIS CREATIVE MEDIUM AND THE WORK OF THE MWELU FOUNDATION TO FOSTER THAT SENSE OF PRIDE AND ACHIEVEMENT IN KIDS WHO RARELY GET THE OPPORTUNITIES TO EXPRESS THEIR CREATIVITY, LET ALONE THEIR LIFE STORIES.”



EAST AFRICA: YOUTH IN ACTION

PARTNERSHIPS

YOUNG COUNTY CHANGE MAKERS (YCCM)

YCCM's aim is to inspire, develop and empower youth in leadership, entrepreneurship, health, peaceful co-existence, and volunteerism by leading sports programs, training initiatives, and mentorship programs.

LOCATION

Kisumu, Kenya

GOALS

The early and late summer teams both sought to provide assistance to YCCM's ongoing projects as needed. The late summer team also aimed to purchase a new series of curriculum books for the library and set up a secure cupboard to keep the books in.

WHY

YCCM became a registered community organization last year, and they are still developing and establishing themselves as an organization. As a result, OG's support creates a significant impact. Through this partnership OG is able to help with their community outreach work and provide an opportunity for cross-cultural learning for both YCCM and the OG teams.

IMPACT FOR PARTNER

Both teams facilitated tutoring lessons and coordinated life skills training at Kisumu Children's Remand Home. During the early summer program two of YCCM's leaders traveled with the team to Jifundishe in order to work with and learn from a well-established NGO with a similar library system. The early summer team also donated bed nets to the Kisumu Children's Remand Home and gave a cash donation of \$1589.88 to YCCM. The late summer team purchased and labeled new curriculum books, donated a secure locker for them to be housed in and made a financial contribution of \$2500.

IMPACT ON TEAM

By partnering with YCCM, the team is able to work in partnership with young leaders who are working to better their community.

SPACE FOR GROWTH

Both teams found that YCCM struggled to find initiatives for the team to get involved with. YCCM is a relatively new organization and as such all parties would benefit from developing a concrete project for the team to work on in partnership with YCCM.

DONATIONS IN KIND: \$1868.01

MONETARY DONATION(S): \$4089.88

TOTAL: \$5957.89

JIFUNDISHE

Jifundishe creates meaningful change in rural Tanzanian communities through education and opportunity.

LOCATION

Ngongongare, Tanzania

GOALS

The early and late summer teams sought to construct eco-benches at the Jifundishe Free Library.

WHY

The library is always busy and there is never enough outdoor seating, the benches will help relieve this issue. The construction process also necessitated recycled material, so the teams organized village clean ups.

IMPACT FOR PARTNER

The early and late summer teams partnered with the youth in the Independent Study (IS) program, an initiative that helps students who are not able to attend school prepare for their national exams. Together with the IS students the teams constructed the benches. The benches both teams created will serve as additional and much needed seating outside of the library. Building the benches also helped clean up the village in the process. Both teams also gave monetary donations to Jifundishe. The early summer team made a donation of \$543.47, and late summer team gave \$1000. The late summer group requested that half of their donation go to the IS program participants for ten scholarships for the following year.

IMPACT ON TEAM

The teams had the opportunity to work with local youth from the IS program and learn more about their lives.

SPACE FOR GROWTH

This is a new partnership with a well-established organization, and there is an opportunity to expand this collaboration.

DONATIONS IN KIND: \$399.79

MONETARY DONATION(S): \$1543.47

TOTAL: \$1943.26





EAST AFRICA: YOUTH IN ACTION

CONTINUED...

CONTRIBUTION

MEN AGAINST AIDS YOUTH GROUP (MAAYGO)

MAAYGO is a youth-led organization whose leaders and members identify as gay, bisexual, male sex workers, and transgender persons who are affected by or infected with HIV/AIDS. The organization conducts HIV/AIDS testing and counselling and STI screening and treatment.

LOCATION

Kisumu, Kenya

WHY

After meeting with MAAYGO during the program, the late summer team felt very passionate about finding a way to contribute to their work. MAAYGO's members identified the need for resources to provide to their clients.

IMPACT FOR PARTNER

Access to additional health care resources will allow MAAYGO to reach out to more individuals.

DONATIONS IN KIND: \$500.00

TOTAL: \$500.00





GUATEMALA: FAIR TRADE

PARTNERSHIPS

ASOCIACION DE MUJERES DEL ALTIPLANO (AMA)

AMA works to empower the most isolated and marginalized women in the highlands of Quetzaltenango and Sololá through training, resources, and partnerships, to help them reach a life of dignity and initiate processes of sustainable development in their communities.

LOCATION

Xela, and Nueva Xetnamit

GOALS

The early summer team's goal was to build four closed-door stoves for four families within the community of Nueva Xetnamit.

WHY

AMA knew of a few families in need of closed-door stoves to replace the traditional fire stoves, which are inefficient, more costly, and cause health problems (smoke inhalation, burns).

IMPACT FOR PARTNER

The early summer team successfully built four closed-door stoves with the help of AMA. The families who received stoves were very appreciative.

IMPACT ON TEAM

It was rewarding for the team to be able to see the tangible impacts of their efforts.

SPACE FOR GROWTH

This was the team's first hands-on service learning project, and they were critical of it, but found it to be an educational experience.

DONATIONS IN KIND: \$900.19

TOTAL: \$900.19

GUATEMALA: FAIR TRADE

CONTINUED...

THE OPERATION GROUNDSWELL HUB

The hub is OG's first centre of operations outside of Canada; it will be used for future community collaborations and volunteer projects.

LOCATION

San Juan, la Laguna, Guatemala

GOALS

The early summer team's goal was to visit OG's first Hub and engage with it while leaving a mark at the site. The team aspired to build a temascal (sweat lodge) at the Hub.

WHY

To develop the Hub as a community space and create a cultural space where members of the community can gather.

IMPACT FOR PARTNER

The team cleared the land for the temascal, dug a foundation, collected hundreds of rocks, built hundreds of bricks, and poured concrete in the foundation. The temascal combines the importance of maintaining Mayan culture as well as the usefulness of adobe as an alternative building material. The temascal will be open to community members.

IMPACT ON TEAM

The group really enjoyed building the structure, and it was very rewarding for them to see the finished product.

SPACE FOR GROWTH

The Hub is going to continue to grow and our summer programs will need to find innovative ways to contribute to it that will further benefit the local community.

DONATIONS IN KIND: \$1495.37

TOTAL: \$1495.37

COMITE DEL CAMPESINOS DEL ALTIPLANO (CCDA)

CCDA is an organization that fights for access to land and labour rights for Mayan campesinos in Guatemala.

LOCATION

San Lucas de Toliman

GOALS

The early summer team's goal was to finance the ongoing construction of a community kitchen that CCDA had begun but didn't have the funds to complete. The team also aimed to do some composting and gardening work.

WHY

The CCDA started the community kitchen project in an effort to elevate the standard of living of campesino communities. The completion of the community kitchen will provide CCDA with shared space for food preparation.

IMPACT FOR PARTNER

The team worked hard with the CCDA members on many projects including the composting and gardening projects, and they also assisted the carpenters working to complete the kitchen.

IMPACT ON TEAM

The team was given an informative presentation on the CCDA's history, impacts, goals, and expectations, which motivated the group to work hard. The team was also excited to learn about the different trades (carpentry, gardening, and organic composting).

SPACE FOR GROWTH

In the future we need to be more clear and comprehensive in establishing expectations about how much the team should accomplish. Being more organized and having more tasks would have improved the effectiveness of the partnership.

DONATIONS IN KIND: \$1340.30

TOTAL: \$ 1340.30



GUATEMALA: FAIR TRADE

CONTINUED...



COMITE DEL CAMPESINOS DEL ALTIPLANO (CCDA)

CCDA is an organization that fights for access to land and labour rights for Mayan campesinos in Guatemala.

LOCATION

San Lucas de Toliman

GOALS

The early summer team's goal was to finance the ongoing construction of a community kitchen that CCDA had begun but didn't have the funds to complete. The team also aimed to do some composting and gardening work.

WHY

The CCDA started the community kitchen project in an effort to elevate the standard of living of campesino communities. The completion of the community kitchen will provide CCDA with shared space for food preparation.

IMPACT FOR PARTNER

The team worked hard with the CCDA members on many projects including the composting and gardening projects, and they also assisted the carpenters working to complete the kitchen.

IMPACT ON TEAM

The team was given an informative presentation on the CCDA's history, impacts, goals, and expectations, which motivated the group to work hard. The team was also excited to learn about the different trades (carpentry, gardening, and organic composting).

SPACE FOR GROWTH

In the future we need to be more clear and comprehensive in establishing expectations about how much the team should accomplish. Being more organized and having more tasks would have improved the effectiveness of the partnership.

DONATIONS IN KIND: \$1340.30

TOTAL: \$ 1340.30



GUATEMALA: FAIR TRADE

CONTINUED...

CONTRIBUTIONS

LA COMITE POR LA DEFENSA TERRITORIO

This committee is fighting against the mine in the El Estor region.

LOCATION

El Estor region, Guatemala

WHY

The early summer team sponsored a delegation of community members to travel to the capital for the screening of Defensora, a documentary that tells the story of people near the foreign owned nickel mine. This project showed the affected community members that their story was being told not just on a local level, but on an international level as well.

IMPACT FOR PARTNER

It was a huge day for the people of El Estor. Many people in the delegation had never left their region before and the opportunity to see their story being told on the large screen was very empowering.

MONETARY DONATION(S): \$796.39

TOTAL: \$796.39

ASSOCIATION OF INTEGRAL DEVELOPMENT IN SAN MIGUEL IXTAHUACAN (ADISMI)

ADISMI works to promote integral development in the community with a vision that is environmentally and culturally sustainable.

LOCATION

San Miguel Ixtahuacan

WHY

The Association is the representing governing body of the communities, which have suffered adverse consequences due to open pit mining.

Impact for Partner: The organization received a financial contribution, and the team organized a newspaper journalist to publish a story and photos in the Prensa Libre (a major newspaper in Guatemala). This press coverage was a really positive part of the contribution.

DONATIONS IN KIND: \$147.80

TOTAL: \$147.80

OG/QT SCHOLARSHIP FUND

We are OG! Quetzaltrekkers is a non-profit, volunteer run trekking and outdoors association in Guatemala.

LOCATION

Guatemala

WHY

The scholarship is an OG project to finance the continuing studies of students from the Hogar Abierto foster care program who are setting out on their own.

IMPACT FOR PARTNER

The fund received a contribution towards their scholarships.

MONETARY DONATION(S): \$17.00

TOTAL: \$17.00



GUATEMALA: EXTREME

PARTNERSHIPS

CHICO MENDES

Chico Mendes is a reforestation project based just outside of Xela.

LOCATION

Xela, Guatemala

GOALS

The team aimed to spend two days providing manual labour based on what Chico Mendes needed.

WHY

Deforestation has become a significant issue in Guatemala; over the last 30 years around 65 percent of Guatemala's original forests have been destroyed. Chico Mendes addresses this issue through its reforestation project.

IMPACT FOR PARTNER

The team spent one full day doing manual labour including digging holes, planting trees, clearing land, and moving soil. After the time spent at Chico Mendes the team gave a monetary donation to support the organization and show their appreciation for the staff's assistance.

IMPACT ON TEAM

The team worked very hard and was able to see the results of their efforts in the form of the 50 planted trees.

SPACE FOR GROWTH

The team did not fully understand the impact of the work they did, which led to frustrations. In the future the value and impact of the team's efforts, and the importance of the partnership should be fully elaborated on so that participants understand the significance of their work.

MONETARY DONATION(S): \$296.75

TOTAL: \$296.75

LA HUERTA COMMUNITY GARDEN/INSTITUTE OF MESOAMERICAN PERMACULTURE (IMAP)

IMAP was established to reconnect Guatemalans with their native practices of growing sustainable agriculture.

LOCATION

San Juan, Guatemala

GOALS

The team's objective was to clear and level a space and design, plan, and implement a community garden.

WHY

The garden will be used as a space for agricultural and food education by a local school and their students. The initiative also seeks to promote Guatemala's native practices and cultural history of sustainable agriculture.

IMPACT FOR PARTNER

The team was able to clear and level the space and begin to design, plan, and implement the garden. The garden needs to be finished, but when it is completed it could have dramatic effects on the community of San Juan. Some of the money spent on this project went towards materials, but most was used to pay IMAP's employees for their transportation, accommodation, food, and time.

IMPACT ON TEAM

The team learnt about permaculture through a workshop hosted by one of IMAP's representatives.

SPACE FOR GROWTH

The timeline of the project was rushed, which is why the team was unable to complete the project. However, OG must continue to provide support in the development of this project and follow up on its progress.

DONATIONS IN KIND: \$380.88

TOTAL: \$380.88

GUATEMALA: EXTREME

CONTINUED...

TZIBAL

Tzibal is a small community, in which OG has a history of working.

LOCATION

Tzibal Community, Guatemala

GOALS

The team sought to assist with a variety of projects around the community.

WHY

OG has a long-term project to build a community space in Tzibal, but the plans were not ready to start this summer. As a result, the team showed our continued support by assisting with other projects.

IMPACT FOR PARTNER

The team constructed a service road linking the main community road to the community space that OG has committed to creating. The team also constructed a large section of the community's principal road, and graphed and surveyed the soccer field. The money spent was used to buy materials for these construction projects.

IMPACT ON TEAM

The team really enjoyed staying in the community and gained some valuable cross-cultural learning from the experience.

SPACE FOR GROWTH

OG will continue to follow up with the Tzibal community in order to coordinate the development of the community space. There have been a number of challenges in this project including the large rock that exists beneath the surface of the entire area. This issue, among others, have slowed the construction process, but the community continues to show support for the project

DONATIONS IN KIND: \$77.16

TOTAL: \$77.16

CONTRIBUTIONS

H.I.J.O.S.

H.I.J.O.S. is a grassroots organization represented by the sons and daughters of those who disappeared during the civil war. The organization participates in social protest through political graffiti and street art.

LOCATION

Guatemala City, Guatemala

WHY

The late summer team went on a tour of the organization and learnt more about the history of the civil war. The organization does unique work in the city that the team wanted to contribute to.

IMPACT FOR PARTNER

The team was able to learn about the civil war from H.I.J.O.S. and contribute financially to the organization. They were also able to promote their work by giving us a tour and networking with the group.

MONETARY DONATION(S): \$44.51

TOTAL: \$44.51

MUSEUM OF MARTYRS

Museum of Martyrs provides a space to explore and learn about the conflict that occurred during the civil war.

LOCATION

Guatemala City, Guatemala

WHY

The organization tells the stories of those who disappeared during the conflict and whose bodies and identities are only now being recovered.

IMPACT FOR PARTNER

The museum was able to promote their space and organization to the OG group and share the history of the conflict that occurred during the civil war. The Museum also received a financial contribution from the team.

MONETARY DONATION(S): \$44.51

TOTAL: \$44.51



INDIA: GENDER & RELIGION

PARTNERSHIPS

DELHI SPEAKER SERIES ON GENDER AND RELIGION

The Speaker Series was a project initiated by the team's Program Leaders in collaboration with many local stakeholders.

LOCATION

Lok Kalamanch Conference Centre, New Delhi

GOALS

The team's goal was to invite speakers to present on a variety of topics surrounding gender and religion in India.

WHY

To inform participants on some of the key issues that will be explored throughout the program. In addition, the purpose was also to develop further connections among leaders and experts in the field.

IMPACT FOR PARTNER

The invited guests and speakers were able to use the speaker series as an opportunity to network and connect with other organizations doing activist work in Delhi as well as in other regions in India. The speakers were also invited to attend as students and found the conference highly informative. Honorariums were given to Ravi Badri, Roma Bhagat, and Manak Matayani for their contributions as speakers at the conference.

IMPACT ON TEAM

The conference successfully set the educational tone for the remainder of the critical focus program and provided participants with an informative base from which to engage in the rest of the program.

SPACE FOR GROWTH

The speaker series was a great opportunity for networking and strong relationships were built among the speakers and Operation Groundswell. These relationships should be followed up on, as some have the potential to develop into partnerships.

DONATIONS IN KIND: \$205.73

MONETARY DONATION(S): \$170.33

TOTAL: \$546.39

INDIA: GENDER & RELIGION

CONTINUED

LOK SAMITI

Lok Samiti is a non-profit organization that runs educational, community development, and human rights projects in Varanasi district in India.

LOCATION

Lok Samiti, Mchindganj, Uttar Pradesh, India

GOALS

The team aimed to help facilitate community development and ownership of community in rural Varanasi.

WHY

The communities of rural Varanasi face a variety of external threats and challenges; through this partnership the team was able to facilitate access to development opportunities.

IMPACT FOR PARTNER

The group contributed to school classes, helped facilitate the daily functioning of the space by cooking and washing up, and visited several work sites. The team made a pledge in solidarity with Lok Samiti to not consume, buy, or endorse Coca Cola or Pepsi products.

IMPACT ON TEAM

The team was able to visit several of their work sites and learned about Lok Samiti's activism against the local Coca Cola plantations. Lok Samiti also facilitated a discussion with the team on the particular barriers faced by rural women in Uttar Pradesh. The team also was able to meet with high school students to make friends, and ask and be asked questions

SPACE FOR GROWTH

Lok Samiti was expecting the team to act as regular volunteers, as we did not properly communicate the critical focus of the program. In the future, we should be sure to let partners know in advance that the program has a critical focus, and that this focus might change the nature of the partnership.

DONATIONS IN KIND: \$340.65

MONETARY DONATION(S): \$1000.00

TOTAL: \$1340.65

WORLD LITERACY CANADA AND SATYAGYAN FOUNDATION

WLC is a Canadian organization working to improve literacy globally. The organization is currently focussed in Varanasi and Canada, and works primarily with women and children. Satyagyan is an Indian organization that grew out of WLC's work in Varanasi to provide more skill-based empowerment opportunities to complement the educational and health programs of WLC.

LOCATION

Varanasi, Uttar Pradesh, India

GOALS

The group aimed to facilitate a cross-cultural exchange of gender experiences and support the summer camp of WLC and Satyagyan.

WHY

Uttar Pradesh is the most populous and impoverished state in India, and these sister organizations are working together to empower communities through education in the region. By helping to facilitate their educational programs in Varanasi the team was able to help promote literacy, while also engaging in their own educational experience.

IMPACT FOR PARTNER

The team volunteered for 70 hours to help facilitate the summer camp and also made a financial contribution.

IMPACT ON TEAM

The team was able to learn more about the organization and participate in a cross-cultural exchange.

SPACE FOR GROWTH

WLC was extremely accommodating, educational, and supportive of the team's schedule. The team had a clear sense of what WLC's does and why their work is important but OG's role was less clear, especially due to the team's rotation to different sites. In the future program leaders should work to develop a clearer mission with WLC/Satyagyan and omit the rotation.

MONETARY DONATION(S): \$628.69

TOTAL: \$628.69

INDIA: GENDER & RELIGION

CONTINUED...

TIBETAN WOMEN'S ASSOCIATION (TWA)

TWA is an organization that supports the needs of the female Tibetan refugee community worldwide.

LOCATION

Dharamsala, India

GOALS

The team's goal was to volunteer their time to TWA, contribute to their programs, and facilitate a cultural exchange.

WHY

TWA addresses the current situation in Tibet with a particular focus on promoting the social, political, and economic equality of Tibetan women.

IMPACT FOR PARTNER

The team spent 156 hours volunteering with TWA and made a financial contribution to the association.

IMPACT ON TEAM

This partnership was a great opportunity for cultural exchange and for the team to explore a unique perspective on gender-related issues affecting Tibetan refugees and Tibetan youth in India. The team also had the honour of attending a private meeting with His Holiness the 17th Karmapa, the head of one of the four major schools of Tibetan Buddhism.

SPACE FOR GROWTH

The diverse volunteering opportunities, professional nature of TWA, and immense value of the project made this an extremely effective partnership that should be continued. In the future the teams should better coordinate the work with TWA's sister organizations.

MONETARY DONATION(S): \$1958.46

TOTAL: \$1958.46

CONTRIBUTIONS

QUEER PRIDE DELHI

Queer Pride Delhi supports the Queer community in Delhi and organizes Delhi's pride parade.

LOCATION

Delhi, India

WHY

The group felt it was relevant to what they had learnt and wanted to support the queer community in Delhi.

IMPACT FOR PARTNER

They received a monetary donation.

MONETARY DONATION(S): \$250.00

TOTAL: \$250.00

DHARAMSHALA DANCE ARTS

The mission of Dharamshala Dance Arts' is to develop a communal space where artists from different disciplines and cultural backgrounds can collaborate. The studio also encourages the use of arts and entertainment to address political and social issues.

LOCATION

Dharamsala, India

WHY

To support local arts and Tibetan youth culture.

IMPACT FOR PARTNER

Dharamshala Dance Arts received a financial contribution to support their work.

MONETARY DONATION(S): \$250.00

TOTAL: \$250.00

INDIA: GENDER & RELIGION

CONTINUED...



STUDENTS FOR A FREE TIBET

Students for a Free Tibet works in solidarity with the Tibetan people in their struggle for freedom and independence.

LOCATION

Dharamsala, India

WHY

The team wanted to contribute to the mobilization of students to advocate for a free Tibet.

IMPACT FOR PARTNER

Students for a Free Tibet received a financial contribution to support their work.

MONETARY DONATION(S): \$250.00

TOTAL: \$250.00

TIBETAN CHILDREN'S VILLAGE (TCV)

The mission of TCV is to ensure that all Tibetan children under its care receive a sound education, develop a firm cultural identity and become self-reliant and contributing members of the Tibetan community and the world at large.

LOCATION

Dharamsala, India

WHY

To support the education of orphaned Tibetan children in exile.

IMPACT FOR PARTNER

TCV received a financial contribution to support their work.

MONETARY DONATION(S): \$250.00

TOTAL: \$250.00

TIBETAN NUN'S PROJECT

The Tibetan Nuns Project provides education and humanitarian aid to refugee nuns from Tibet and Himilayan regions of India. They aim to provide facilities and programs to educate, empower, and improve the status of ordained Tibetan women.

LOCATION

Dharamsala, India

WHY

To contribute to female religious education and the preservation of Tibetan culture.

IMPACT FOR PARTNER

The Tibetan Nun's Project received a financial contribution to help support their work.

MONETARY DONATION(S): \$250.00

TOTAL: \$250.00

HARMANDIR SAHIB

Harmandir Sahib is a Sikh Gurdwara, it is intended to be a place of worship for men and women from all walks of life and all religions to come and worship God equally.

LOCATION

Amritsar, India

WHY

The team stayed and ate at the Ashram without cost and wanted to contribute to the initiatives of the Gurdwara. These initiatives include feeding 60 000 people each day and accommodating many people free of charge.

IMPACT FOR PARTNER

The partner received a financial contribution, and the team also volunteered their time.

MONETARY DONATION(S): \$473.13

TOTAL: \$473.13



INDIA: HIGH ALTITUDE EDUCATION

PARTNERSHIPS

OM SHANTI OM TRUST

Om Shanti Om Trust's vision is to create a barrier free society, in which every individual has equal opportunity, and access to the services needed to help them cope with their day-to-day challenges.

LOCATION

Manali, India

GOALS

The team's goal was to provide 40 to 50 hours of teaching assistance to Om Shanti Om Trust and help them market and facilitate their fundraising event.

WHY

The team established this goal in an effort to support Om Shanti Om's teaching programs and work towards their goal of creating a barrier free society.

IMPACT FOR PARTNER

The team was able to contribute 40 to 50 hours of teaching assistance and activity planning. They also successfully helped to prepare and execute the fundraising event.

IMPACT ON TEAM

The team was able to learn from Om Shanti Om's practices and teach others about the organization's vision to create a barrier free society.

SPACE FOR GROWTH

The team had a positive experience working with Om Shanti Om, and was inspired by what one person can accomplish in India. At times the team felt that the approach towards projects was too relaxed and was not well organized, but they were able to reach the established goals. In the future we should work to create a more structured work plan.

DONATIONS IN KIND: \$47.37

MONETARY DONATION(S): \$530.00

TOTAL: \$576.21

17000 FT FOUNDATION

17000 ft foundation aims to strengthen the remote villages and schools of rural Ladakh through technology, collaboration, and passion.

LOCATION

Lingshed, Ladakh, India

GOALS

The team aspired to provide 60-70 hours of teaching assistance, install a community playground, do some infrastructure repairs, and help with library cataloguing. The group also aimed to create a community requested theatre production over the course of six evening sessions.

WHY

The limited educational opportunities in rural Ladakh have sparked an exodus of young families to far away cities, where many of them face significant struggles. OG contributed to 17000 ft.'s effort to maintain the culture, history and livelihoods of the people of these communities by increasing learning opportunities in rural Ladakh.

IMPACT FOR PARTNER

The partner organization received support for their programs through the team's teaching assistance, playground installation, infrastructure repairs, library cataloguing, and theatre production.

IMPACT ON TEAM

The team was able to learn about the partner organization and gain valuable skills.

SPACE FOR GROWTH

The team experienced discrepancies between its values and those of the project, but created a document dedicated to improving the partnership. The document outlined OG's stance on projects and partnerships and delineated a plan for moving forward with the partnership.

DONATIONS IN KIND: \$29.37

MONETARY DONATION(S): \$5100.00

TOTAL: \$5129.37

MIDDLE EAST: BEHIND THE HEADLINES

PARTNERSHIPS

SHORASHIM

Shorashim brings Israelis and Palestinians together for trust building and dialogue activities.

LOCATION

Gush Etzion, Israel

GOALS

Both teams aspired to assist in the establishment of a working farm at Shorashim.

WHY

The farm will help fund Shorashim's Palestinian and Israeli coexistence and dialogue programs.

IMPACT FOR PARTNER

The early summer team assisted in the digging of a well, cleared fields in preparation for fall cultivation, built a rock wall around the perimeter of the farm, and made a donation of \$300. The late summer team planted 90 fruit trees, did some gardening, painted a structure at the farm, and made a financial contribution of \$100.

IMPACT ON TEAM

The teams were welcomed to the farm and were able to learn about Shorashim's mission to create dialogue and coexistence in the region.

SPACE FOR GROWTH

The partnership was really successful, and should continue to be fostered.

DONATIONS IN KIND: \$1,360.32

MONETARY DONATION(S): \$421.37

TOTAL: \$1781.69

CONTRIBUTIONS

TERRESTRIAL JERUSALEM (TJ)

TJ is an Israeli non-governmental organization that works to identify and track the full spectrum of developments in Jerusalem that could impact either the political process of permanent status operations, destabilize the city, spark violence, or create humanitarian crises.

LOCATION

Jerusalem, Israel

WHY

TJ is involved in producing maps and resources on the political geography in Jerusalem. After the organization met with the early summer group and discussed issues in Jerusalem the team wanted to contribute to what they do.

IMPACT FOR PARTNER

The organization received financial report to help support their operations.

MONETARY DONATION(S): \$191.90

TOTAL: \$191.90

WOMEN OF THE SEA

Women of the Sea organizes trips for Palestinians and Bedouins to visit the Mediterranean and Tel Aviv/Jaffa.

LOCATION

Tel Aviv, Israel

WHY

The trip was a meaningful experience for the children, as it was their first time seeing the sea.

IMPACT FOR PARTNER

The early summer team assisted by facilitating the trip and by making a financial contribution to the organization. The money could be used to pay for food, busses, or permit fees for future trips.

MONETARY DONATION(S): \$300.00

TOTAL: \$300.00

MIDDLE EAST: BEHIND THE HEADLINES

CONTINUED...

BINA

BINA is the leading organization at the intersection of Jewish Pluralism and Social Action in Israel. The organization strives to strengthen Israel as a democratic pluralistic society, by emphasizing Judaism as a culture, through Jewish values of Tikkun Olam (repair the world).

LOCATION

Tel Aviv, Israel

WHY

The early summer team met with BINA, and toured Tel Aviv with the organization. After seeing the work they are doing in the region the team wanted to support BINA by making a donation.

IMPACT FOR PARTNER

The early summer team's donation will not only contribute to the work they do, but also serves as a representation of our continued partnership.

MONETARY DONATION(S): \$100.00

TOTAL: \$100.00

CAMPAIGN TO PROTECT PALESTINIAN RESIDENCY RIGHTS IN JERUSALEM

The campaign works to advocate for equal rights on behalf of Palestinian residents of Jerusalem.

LOCATION

Jerusalem, Israel

WHY

The organization has been an excellent partner, has hosted teams, and is making a positive impact in Jerusalem.

IMPACT FOR PARTNER

The early summer team made a financial contribution to the campaign's work.

MONETARY DONATION(S): \$200.00

TOTAL: \$200.00

QUSRA SUMMER CAMP

Qusra summer camp provides activities for children living in Qusra, a small Palestinian village near Nablus.

LOCATION

Qusra, Palestine

WHY

The early summer team volunteered here and were treated wonderfully by the community and wanted to make a contribution.

IMPACT FOR PARTNER

The contribution will provide a large amount of materials for the camp.

MONETARY DONATION(S): \$300.00

TOTAL: \$300.00

AL JABAL VILLAGE KINDERGARTEN AND AFTER SCHOOL CENTRE

The Al Jabal Village Kindergarten and After School Centre provides a space for children to play and learn where there would not otherwise be one in the village.

LOCATION

Al Jabal, Palestine

WHY

OG volunteered here last year through Rabbis for Human Rights, and school materials were identified as the Centre's primary need.

IMPACT FOR PARTNER

The money contributed by the early summer team will provide a large amount of materials and resources for the Kindergarten and After School Centre.

MONETARY DONATION(S): \$837.00

TOTAL: \$837.00

KEFFIYEH CENTRE

The Keffiyeh Centre serves the youth of New Askar Refugee Camp with a place to meet. They organize trips, sports teams, yoga classes, boxing, music, dance, and more.

LOCATION

Nablus, Palestine

WHY

The late summer team wanted to support the Centre, as it is one of the few organizations in the area working primarily with girls.

IMPACT FOR PARTNER

The donation made a significant impact and allowed the Centre to continue to finance their sports teams and potentially pay some of their volunteers or a few teachers.

MONETARY DONATION(S): \$1,219.15

TOTAL: \$1,219.15

MIDDLE EAST: BEHIND THE HEADLINES

CONTINUED...



IBRAHIM AL KHALIL ASSOCIATION

The Association provides a place for children, women, and other community members to learn and play in a safe environment. Ibrahim Al Khalil Association also hosts free clinics with UN and Doctors Without Borders.

LOCATION

Hebron, Palestine

WHY

Last year OG made a donation that sent 2 females and 2 males to University for one year. This impact was extremely significant, and the teams wanted to continue to help the Association make an impact.

IMPACT FOR PARTNER

The early summer team contributed \$200, and the late summer team made a financial contribution of \$1456.29.

MONETARY DONATION(S): \$1,656.29

TOTAL: \$1,656.29

WOMEN IN HEBRON COOPERATIVE (WIH)

WiH is a cooperative made up of women who produce traditional Palestinian clothes and crafts in Hebron and the surrounding villages.

LOCATION

Hebron, Palestine

WHY

When the teams met with the sisters who founded the cooperative they were impacted by their story and wanted to contribute to the cause. Due to the situation in Hebron at the time of the trip, tourism, which generates a significant income for the co-op, is nearly at a halt.

IMPACT FOR PARTNER

As a result, the money contributed by each team will make a significant impact on the women and their families. The early summer team contributed \$860, and the late summer team contributed \$1219.15.

MONETARY DONATION(S): \$2079.15

TOTAL: \$2079.15



MIDDLE EAST: BEHIND THE HEADLINES

CONTINUED...

COMBATANTS FOR PEACE

Combatants for Peace is made up of ex Israeli and Palestinian fighters who are advocating for a peaceful solution to the conflict.

LOCATION

Ramallah, Palestine

WHY

The organization is unique in its mission but is still in its early stages and could really benefit from OG's support

IMPACT FOR PARTNER

The organization does not yet have a centralized leadership or office space. In light of this, our financial contribution could potentially have a significant impact on their operations. The early summer team made a donation of \$850, and the late summer team contributed \$1219.15.

MONETARY DONATION(S): \$2069.15

TOTAL: \$2069.15



PERU: AMAZON ADVENTURE

PARTNERSHIPS

KALLPA

Kallpa is an organization that seeks to improve the quality of life of children and adolescents from disadvantaged sectors, by strengthening their health and social skills.

LOCATION

El Aguaje, Pasaje Iván, Iquitos, and El Porvenir, Peru

GOALS

In El Aguaje and Pasaje Iván the early summer team's goal was to help construct KALLPA's respective youth centres. The early summer group also aimed to work at El Porvenir School to create an assembly platform in order to prepare for the construction of a new library. The late summer team planned to build off of the previous team's work and install an anti-flood wall at El Porvenir School, in preparation for the construction of the library.

WHY

In El Aguaje another organization had purchased a plot of land for the development of KALLPA's youth centre; with our help, this project could continue. In Pasaje Iván the youth centre could offer a space for young people to gather and develop a sense of pride for their area. The El Porvenir Primary School wants to construct a library to make books more accessible to students. However, the site currently floods, which is why we were asked to construct an assembly platform and anti-flood wall.

IMPACT FOR PARTNER

In El Aguaje the early summer team weather proofed the roof, sanded and painted everything, and installed walls, doors, windows, a staircase, electricity and locks. The group was unable to complete the cement flooring, but gave a donation of \$495.67 towards its

completion. In Pasaje Iván the early summer team installed electricity and locks, and put up a partition to separate convening space from storage space. The early summer team also contributed to the Iquitos and Pampachica communities. At El Porvenir School the early summer team worked on the Assembly Platform, which was continued and completed by the late summer group. The late summer team dug a trench to fit the base of the anti-flood wall, constructed a metal framework for the wall, and filled the trench with concrete. The final stage of the project was completed after the volunteers' departure. The late summer team also made a donation of \$127.13 to El Porvenir School.

IMPACT ON TEAM

The early summer team worked very hard in El Aguaje and Pasaje Iván and was able to see the results of their actions through the construction of the structures. In Pasaje Iván the team was also able to work directly with the young people whose project they were supporting. The late summer team also achieved a great deal in their construction efforts. Ultimately both teams walked away from these projects with a huge sense of pride and accomplishment.

SPACE FOR GROWTH

It is necessary to create stronger lines of communication between OG volunteers, Kallpa, and the community. Spending more time on the project to get introduced and consult with Kallpa would have benefited the team, and the construction process. The late summer team found that the partnership was hugely strengthened by the challenges that came up. We should continue to work constructively from these challenges.

DONATION IN KIND: \$9619.55

MONETARY DONATION(S): \$757.30

TOTAL: \$10,376.85

PERU: AMAZON ADVENTURE

CONTINUED...

CONTRIBUTIONS

AMAZON ANIMAL ORPHANAGE AND PILPINTUWASI BUTTERFLY FARM

The Amazon Animal Orphanage serves as a “centre of custody” for rescued wild animals, and the Pilpintuwasi Butterfly farm is designed to enable visitors to increase their interest in and love of the natural world, and help with conservation efforts.

LOCATION

Padre Cocha, Iquitos, Peru

WHY

The organization works to combat animal trafficking industries in the Amazon and has faced conflicts with and the criminal activities of a nearby butterfly farm. As a result, the organization could really benefit from OG’s visible support.

IMPACT FOR PARTNER

The early summer team’s donation of \$500 will help the organization defend itself against the criminal activities of the other butterfly farm and further support the ethical protection of animals in the Amazon area. The late summer team made a donation of \$304 to support the wildlife and to aid in the creation of a larger jaguar cage.

MONETARY DONATION(S): \$804

TOTAL: \$804

REYNA VERONICA RICOPA SIMA

Reyna is a community leader; she also was the team’s cook and supported the team in other capacities as well.

LOCATION

El Aguaje, Pampachica, Iquitos, Peru

WHY

Reyna was integral to the team’s work in Pampachica; she is a leader in the community, the team’s cook, and she collaborated with the team often. The early summer team realized Reyna had been spending her entire budget on ingredients, and the team wanted to thank her for her time and devotion. The late summer team also made a contribution to Reyna to feed the additional workforce and volunteers.

IMPACT FOR PARTNER

The early and late summer teams contributed \$38.41 to encourage Reyna to continue her career as a chef and to demonstrate the value of her services and volunteering. The late summer team also contributed \$262.23 to Reyna to feed the workforce and volunteers.

MONETARY DONATION(S): \$339.02

TOTAL: \$ 339.02

PACHACUTEC YOUTH CENTRE

The Pachacutec Youth Centre project was conceptualized with the intention of creating a space where you can gather and collaborate.

LOCATION

Pachacutec, Peru

WHY

The community of Pachacutec initiated a youth centre, which has yet to be completed due to lack of funding. Completing this project will mean the youth of the community have a space of their own where they can collaborate and support each other.

IMPACT FOR PARTNER

The late summer team made a financial contribution towards the completion of the youth centre building.

MONETARY DONATION(S): \$700

TOTAL: \$700

“ONE DAY IN PACHACUTEC TAUGHT ME MUCH MORE ABOUT POVERTY AND HUMAN RIGHTS THAN WHAT I COULD LEARN IN UNIVERSITY FOR YEARS. IT WAS SIMPLY AN OUTSTANDING EXPERIENCE.”

PERU: AMAZON ADVENTURE

CONTINUED...



FRANCISCO TOMAS MARTIN PIZARRO GONGORA

Francisco is member of Mayantu who joined us on our late summer program to support the construction and development of the anti-flood wall in Pampachica.

LOCATION

Pampachica, Iquitos, Peru

WHY

Francisco worked above and beyond what was expected of him as a volunteer. He continued to work on the project after the departure of our participants and saw the construction through until the end.

IMPACT FOR PARTNER

The late summer team expressed their appreciation for Francisco's hard work a gift that included mementos of his time working with OG.

DONATIONS IN KIND: \$24.23

TOTAL: \$24.23

EL CHINO

The El Chino community has hosted OG teams and shared their knowledge with our groups.

LOCATION

Tamishyacu, Iquitos

WHY

OG has been working with the El Chino community for the past two years. They hosted our jungle tour for four days and invited the team into their homes to learn about their way of life.

IMPACT FOR PARTNER

The late summer group gave the Soplin family and community gifts to thank them for their support.

DONATIONS IN KIND: \$59.59

TOTAL: \$59.59

EDUARDO CUELLAR HIDALGO

Eduardo worked with both the early and late summer teams as a local volunteer and liaison. He worked in the daily manual labour aspects of construction, helping to guide, train, and translate for our volunteers.

LOCATION

Pampachica, Iquitos, Peru

WHY

Eduardo worked in the daily manual labour aspects of construction, helping to guide, train, and translate for our volunteers. Eduardo worked vigilantly throughout the projects and closely with our participants to maintain and strengthen their cultural immersion.

IMPACT FOR PARTNER

The late summer team bought gifts for Eduardo including mementos of his time working with OG.

DONATIONS IN KIND: \$25.39

TOTAL: \$25.39

PERU: MIND & BODY



PARTNERSHIPS

KAUSAY PUNKU

The Ccapa family uses their Ecocentre to fight against the loss of knowledge, traditions, and lifestyles in the Sacred Valley.

LOCATION

Maska, Pisac, Cusco, Peru

GOALS

The early and late summer teams aimed to learn about traditional Incan agriculture, make adobe, and help the brothers with their distillery.

WHY

The Ccapa family are long-term partners and friends of OG. Their efforts to promote organic farming in the region are extremely valuable and unique, as they help fight against the loss of knowledge, and traditions in the Sacred Valley. The organic seed donation program also has the potential to significantly impact the community and impel others to plant sustainably.

IMPACT FOR PARTNER

During their time with the Ccapa family the early summer team made over 50 adobe bricks and lots of masa. The team also harvested lots of muna to distill, sided a house, and laid a solid rock foundation for the store/lab. The early summer team donated \$512.95, which was used by the family to set up a bank account in order to begin the seed donation project. The late summer team made masa, and sided a house with it.

IMPACT ON TEAM

Both teams spent an amazing five days cooking with and learning from the Ccapa family. The workshops hosted by the family on adobe, distilling traditional herbs, and siding with bamboo were enriching learning experiences for our team members.

SPACE FOR GROWTH

This was a very positive partnership and should continue to be fostered.

DONATIONS IN KIND: \$166.95

MONETARY DONATION(S): \$5269.06

TOTAL: \$5436.01

PERU: MIND & BODY

CONTINUED...



KALLPA

Kallpa is an organization that seeks to improve the quality of life of children and adolescents from disadvantaged sectors, by strengthening their health, and social skills.

LOCATION

Pomecanchi, Lagunas, Peru

GOALS

Both teams aimed to clean and restore a maternal health centre in the community of Chosecani.

WHY

The centre would provide a space for new mothers to be educated on caring for their children, including the development of skills and knowledge that the new mothers may not otherwise have access to.

IMPACT FOR PARTNER

The early summer team painted murals, installed water and electricity, and sanded and painted the entire centre. The early summer group also gave Kallpa monetary donation of \$922.75 towards their general operations. The late summer group put up a massive fence around the perimeter of the centre to prevent the cows from getting in and finished painting. The late summer team also sunk tires into the ground and painted them to create a playground area.

IMPACT ON TEAM

Both teams had a great experience working to restore the centre. The late summer group was more involved in the community as they arrived on the first day of a festival.

SPACE FOR GROWTH

During the early summer program the partnership worked really well. However, communication broke down and the program leaders did not follow up as well as they should have, and as a result the project almost fell through. For future projects we will need to make sure that we regularly communicate with the community especially in preparation for the late summer teams.

DONATIONS IN KIND: \$3518.46

MONETARY DONATION(S): \$2576.76

TOTAL: \$6095.22

SOUTHEAST ASIA: ANIMAL CONSERVATION



PARTNERSHIPS

MIRROR FOUNDATION

The Mirror Foundation is a grassroots Thai non-governmental organization that supports small, isolated mountain communities.

LOCATION

Chiang Rai, Thailand

GOALS

Both teams aimed to help develop a new homestay building, with accommodations, kitchen, and external bathroom facilities (3 buildings in total).

WHY

The project was initiated in response to the lack of employment opportunities, as well as an absence of land access for agricultural development. The homestay building will provide employment opportunities, help retain the younger generation, and build a strong and sustainable community.

IMPACT FOR PARTNER

During the early summer team's 4 days there the whole house was completed with the exception of the outdoor bathroom. The late summer team spent 4 days constructing a water tank, laying pipes for a water system, cementing the area around the bathroom, painting murals within and outside the bathroom, and creating a signpost for the homestay.

IMPACT ON TEAM

Both teams were able to see the tangible and direct results of their efforts, which was very rewarding. The late summer project was extremely positive because the team was able to return to the same community and finish what the early summer group had started.

SPACE FOR GROWTH

We've been working with Mirror for six years, and their experience facilitating volunteer placements made the leader's job much easier. This long-standing partnership has been extremely positive. The Mirror Foundation has grown so much in its capacity that OG's involvement is now much less critical. We will need to revisit the partnership and make a plan for moving forward.

DONATIONS IN KIND: \$2000

MONETARY DONATION(S): \$4605.52

TOTAL: \$6605.52

SOUTHEAST ASIA: ANIMAL CONSERVATION

CONTINUED...



ELEPHANT VALLEY PROJECT (EVP)

The Elephant Valley Project is an ecotourism project that provides an alternative approach to elephant care, rehabilitation, and conservation.

LOCATION

Sen Monorom, Mondulkiri, Cambodia

GOALS

The objective was to give the teams an intimate but ethical encounter with the highly endangered elephants while making necessary improvements to the sanctuary.

WHY

The organization employs local Bunong people and provides them with health care. They also have a forest protection program, which employs rangers to monitor illegal activities that threaten the habitat of wild elephants in the region.

IMPACT FOR PARTNER

The early summer team cleared a field of young bamboo trees of weeds and other plants that might stunt the growth of the bamboo, a favourite food of the elephants. The early summer team also helped build a dam to create a deep pool that the elephants will be able to use for the daily baths. The late summer team cleared weeds from pineapple and banana fields and chopped down banana trees to feed the elephants. The volunteer fees of both groups went towards the employment of community members, the healthcare for elephants owned by local communities, an indigenous community land titling project, the community health cover project, the school scholarship project, and the housing support project.

IMPACT ON TEAM

The team had a really positive experience volunteering and interacting with the elephants.

SPACE FOR GROWTH

EVP is a well-respected NGO that OG has had many positive experiences with. The partnership is well organized, positive, and should be continued.

MONETARY DONATION(S): \$5551.92

TOTAL: \$5551.92



SOUTHEAST ASIA: ANIMAL CONSERVATION

CONTINUED...

CONTRIBUTIONS

SIKHA ASIA FOUNDATION (SAF)

SAF supports underprivileged children by giving them educational opportunities.

LOCATION

Thanon Jetsiprai, Klong Toey, Bangkok

WHY

The foundation could use the funds given by the early summer team to purchase books, which will increase the reading material available to the children who visit the library.

IMPACT FOR PARTNER

The books helped the Foundation provide more educational opportunities for children in the region.

MONETARY DONATION(S): \$103.85

TOTAL: \$103.85

MEKONG TURTLE CONSERVATION CENTRE (MTCC)

Conservation International and the monks of the 100 Pillar Pagoda grounds opened the centre with the goal of increasing the number of these critically endangered species in the wild.

LOCATION

Kratie, Cambodia

WHY

The centre raises turtles in captivity and then releases them back into the river, a process that is expected to increase the number of these endangered species in the wild.

IMPACT FOR PARTNER

The early summer team was able to assist the MTCC by releasing turtles and by giving a financial contribution towards their operations.

MONETARY DONATION(S): \$351.58

TOTAL: \$351.58

PHARE PONLEU SELPACK (PPS)

PPS is a Cambodian association that works with vulnerable children, young adults and their families through three fields of intervention: Art schools, Social support and Educational programs.

LOCATION

Battambang, Cambodia

WHY

The organization provides a unique space for art and education for hundreds of underprivileged Cambodian youth.

IMPACT FOR PARTNER

Both the early and late summer teams made donations to the circus, from which the profits go directly to PPS.

MONETARY DONATION(S): \$268.32

TOTAL: \$268.32

FREE THE BEARS

Free the Bears is an international organization that was founded in 1993 to protect Asiatic black bears being held in captivity in inhumane conditions.

LOCATION

Phnom Penh, Cambodia

WHY

The Moon and Sun Bears in Cambodia are endangered due to excess hunting, illegal trade, deforestation, and human consumption. The team wanted to support the organization that works to rescue these bears.

IMPACT FOR PARTNER

During the team's visit they were able to contribute to the day-to-day workings of the organization. The team also made a financial contribution to the organization to help them continue their work.

MONETARY DONATION(S): \$611.11

TOTAL: \$611.11

SOUTHEAST ASIA: CITIES & SANCTUARIES



PARTNERSHIPS

BANTEAY CHHMAR COMMUNITY-BASED TOURISM (CBT)

Banteay Chhmar Community-Based Tourism is a group of locals dedicated to preserving and protecting the cultural heritage of the area as well as creating a responsible tourism industry in Banteay Chhmar.

LOCATION

Banteay Chhmar, Cambodia

GOALS

The early summer team's goal was to strengthen the partnership with CBT and clarify OG's mission and volunteering model. The late summer team aimed to construct a waste management site and sanitation station at the local primary school and to develop more environmental awareness among the community.

WHY

The early summer team spent time strengthening our relationship with CBT in order to ensure our projects remained partnership based. The late summer team helped create a cleaner and more sanitary method for removing waste from the community.

IMPACT FOR PARTNER

During the early summer CBT was able to learn more about OG, and the team was able to learn about CBT. The group also hosted a community party in Banteay Chhmar. The late summer team funded the construction of sinks, and a waste management site, which will make maintenance of the area much easier and cleaner.

IMPACT ON TEAM

During their stay in Banteay Chhmar the early summer team learned a lot about the difference between charity and solidarity and developed a better understanding of our partnership model. The late summer team worked with teachers to develop different methods for teaching environmental consciousness to the community, which was a learning experience for everyone involved.

SPACE FOR GROWTH

The time the early summer group time spent strengthening the partnership and explaining why we do not distribute goods or participate in one-off projects helped both parties better define their roles within the partnership and created space for future growth. The partnership also presents an opportunity for OG to help the organization grow in developing a strong development model in their community.

DONATIONS IN KIND: \$1468.66

TOTAL: \$1468.66

SOUTHEAST ASIA: CITIES & SANCTUARIES

CONTINUED...

OCKENDEN

Ockenden Cambodia works with vulnerable communities to promote capacity building and greater self-sufficiency through their activities.

LOCATION

Battambang, Cambodia

GOALS

Both the early and late summer teams' wanted to support Ockenden's educational farm to help them maintain the centre and continue to provide local farmers with learning opportunities. The teams also wanted to learn about and experience a day in the life of a farmer.

WHY

Ockenden seeks sustainable solutions and self-sufficiency for the vulnerable populations in Cambodia. By volunteering their time at Ockenden the team was able to participate and contribute to the organizations efforts to help thousands of Cambodians improve their livelihoods.

IMPACT FOR PARTNER

The early summer team funded and built a new tree nursery, planted trees and vegetables, created compost piles, made raised bed gardens, weeded, and fertilized. The late summer team planted over 300 trees, created compost piles, made raised bed gardens, fixed the cow fence, weeded, planted, and fertilized. Through these experiences both groups learnt about Cambodia and permaculture.

IMPACT ON TEAM

The team had an extremely positive experience. Since the permaculture farm serves as an educational centre for local farmers, the teams were also able to learn through their participation.

SPACE FOR GROWTH

The organization has only recently started hosting volunteer programs, but has been doing an excellent job developing them. They reach out to very isolated and rural communities so there are always amazing opportunities.

DONATIONS IN KIND: \$3316.24

TOTAL: \$3316.24

TINY TOONES

Tiny Toones' mission is to provide a safe, positive environment for at-risk youth to channel their energy and creativity into the arts and education, empowering them to build self-confidence in their daily lives, aim for better employment possibilities, and feel supported in pursuing their dreams.

LOCATION

Phnom Penh, Cambodia and Sihanoukville, Cambodia

GOALS

The early summer team sought to create a retreat where staff could develop goal setting and conflict resolution skills. The late summer group aimed to create a retreat for the students of Tiny Toones.

WHY

The staff retreat offers Tiny Toones employees an opportunity to get away from the stressful environment of the drop-in-centre, reconnect with each other, and realign their personal and organizational goals. The student retreat was an opportunity to reward and inspire the students of the drop-in centre by providing an opportunity for the students to challenge themselves and grow as leaders.

IMPACT FOR PARTNER

Due to their low wages the staff would not otherwise have the opportunity to participate in this type of retreat. The retreat was an opportunity to recognize and reward the hard work of the staff. The early summer team also contributed \$1000 to Tiny Toones. The student retreat rewarded and encouraged excellent behaviour and continued to develop the students' leadership skills.

IMPACT ON TEAM

The teams had incredible experiences working with the staff and students of Tiny Toones during both the early and late summer programs.

SPACE FOR GROWTH

The success of these retreats indicates that this is a partnership that should continue to be developed and could serve as an example to other teams and partnerships. It is a wonderful example of cross-cultural exchange that focuses on knowledge sharing.

DONATIONS IN KIND: \$4320.56

MONETARY DONATION(S): \$1000.00

TOTAL: \$5320.56

SOUTHEAST ASIA: CITIES & SANCTUARIES

CONTINUED...

MAD MONKEY HOSTEL

Mad Monkey Hostel is based in Phnom Penh that seeks to think and live globally but contribute locally. The guesthouse started a Clean Water Project to help break the cycle of poverty in Siem Reap.

LOCATION

Siem Reap, Cambodia

WHY

Figures estimate that between 50-60% of rural Cambodians do not have access to clean drinking water.

IMPACT FOR PARTNER

It takes \$230 to build a well; the early summer team the money they needed to make the well a reality. Each well supplies clean drinking water to four families.

MONETARY DONATION(S): \$135.87

TOTAL: \$135.87

PHARE PONLEU SELPAK (PPS)

PPS is a non-profit Cambodian association working with vulnerable children, young adults and their families through 3 interweaving fields of intervention: arts schools, social support and educational programs.

LOCATION

Battambang, Cambodia

WHY

The organization provides a unique space for art and education for hundreds of underprivileged Cambodian youth. Phare Ponleu Selpak's Battambang Circus has performances every other night, which are used to support the centre. It features their circus school and tackles Cambodian social issues in their story lines.

IMPACT FOR PARTNER

Both the early and late summer teams donated to the circus, from which the profits go directly to PPS. The early summer team gave \$135.87 and the late summer team gave \$133.33.

MONETARY DONATION(S): \$269.20

TOTAL: \$269.20

CAMBODIAN LIVING ARTS AND THE PHNOM PENH CULTURAL CENTRE

Cambodia Living Arts works to empower Cambodians to transform as individuals and as a society through the power of the arts. The Cultural Centre works to preserve the performing arts, traditional dance and heritage activities.

LOCATION

Phnom Penh, Cambodia

WHY

There was a performance when the team was there to support the preservation of culture and promote the fusion of traditional Khmer techniques to modern dance. The proceeds from the show went towards supporting the programs at the Cambodian Living Arts.

IMPACT FOR PARTNER

The organizations received our donations to help support their initiatives.

MONETARY DONATION(S): \$161.92

TOTAL: \$161.92



WEST AFRICA: GRASSROOTS EDUCATION

PARTNERSHIPS

HORIZON CHILDREN'S CENTRE (HCC)

HCC is a Canadian charitable project that empowers orphans and vulnerable children in Sandema through education and the development of leadership and life skills.

LOCATION

Sandema, northern Ghana

GOALS

The early summer team aimed to organize a trip for the students to a nearby town where they could see crocodiles. The team also visited a slave camp in Paga, which was a difficult but educational experience. The late summer team wanted to provide additional classes at the centre and facilitate lessons and activities.

WHY

Bringing some of the boys from HCC to Paga in the early summer was a great way for the team to get to know the boys from HCC and was a learning opportunity for all involved. During the late summer visit the younger boys requested additional classes.

IMPACT FOR PARTNER

The early summer's trip to Paga with the boys a fun way for the team to share a learning experience with the children from HCC. The early summer team also made a donation of \$915.32. During the late summer visit the HCC boys really enjoyed the lessons and were able to learn about a variety of different topics like math, reading, sports, and more. The late summer team made a financial contribution of \$1055.36 to the organization.

IMPACT ON TEAM

The group really enjoyed the one-on-one time working with the boys at HCC.

SPACE FOR GROWTH

OG has been working with HCC for many years, and as the centre transforms HCC requires less hands-on support from our teams. As a result, the partnership has shifted, and the team often works more generally with the community. We expect this shift to continue into the coming year.

DONATIONS IN KIND: \$320.12

MONETARY DONATION(S): \$1970.68

TOTAL: \$2290.80

GHANA FEDERATION OF THE URBAN POOR (GHAFUP)

GHAFUP is an organization working to allow people in Old Fadama access to rights, education, incomes and dignity.

LOCATION

Old Fadama, Accra

GOALS

The late summer team's goal was to better understand the status of education in Ghana and give the team an opportunity to interact with school-going learners in an illegal settlement in Accra.

WHY

Although the Ghanaian government constitutionally guarantees free primary education not all individuals are recognized by this guarantee, including people living in illegal settlements such as Old Fadama. GHAFUP helps secure access to education for these children.

IMPACT FOR PARTNER

The late summer team taught art and played quiz-style games with the students. The team also contributed financially to the organization and suggested the money go towards Bethel School in Old Fadama.

IMPACT ON TEAM

The team recognized that the youth had the same drive and motivation as kids at home. They realized that given more opportunities and resources to learn from, these students would no doubt excel. The experience was very rewarding and educational for the team.

SPACE FOR GROWTH

It was difficult to visit the classrooms without disturbing other students. The experience set the stage for some very fruitful discussions, but the program was only determined the day before the team arrived, which meant that the team's presence could have been better organized.

DONATIONS IN KIND: \$40.64

MONETARY DONATION(S): \$1014.90

TOTAL: \$1055.36



WEST AFRICA: GRASSROOTS EDUCATION

CONTINUED...

CONTRIBUTIONS

RISE UP DEVELOPMENT COLLECTIVE (RUDC)

RUDC is an international, volunteer-based organization focused on improving the lives of the people of Wli Todzi, Ghana.

LOCATION

Wli Todzi, Volta Region, Ghana

WHY

OG has contributed to the construction of the clinic in Wli Todzi over the past two years and would like to continue to support the project. OG would like to help develop the project in ways that don't just build up physical spaces, but contribute to the capacity of those spaces as well.

IMPACT FOR PARTNER

The organization received a financial contribution to sponsor the education of a young person in Wli Todzi community to complete their schooling, become a midwife, and work at the local clinic. The early summer team gave \$915.32 and the late summer team contributed \$791.52.

MONETARY DONATION(S): \$1706.84

TOTAL: \$1706.84

CAMPAIGN FOR FEMALE EDUCATION (CAMFED)

Camfed works to educate girls and support young women to help tackle poverty in rural communities.

LOCATION

Tamale, Northern Ghana

WHY

In Northern Ghana chronic poverty excludes many young girls from an education. This funding facilitates the education of, empowers, and develops leadership capacity among young girls.

IMPACT FOR PARTNER

The early summer team gave a donation of \$190.00 and the late summer team contributed \$541.54. The money given by each team will go towards furthering the education of young girls.

MONETARY DONATION(S): \$731.54

TOTAL: \$731.54

REGIONAL ADVISORY INFORMATION NETWORK SYSTEM (RAINS)

RAINS works with communities and development partners to improve the quality of life of vulnerable groups especially children, women, girls and people with disabilities. They do this by strengthening local structures to promote and ensure fairness for all people in Northern Ghana.

LOCATION

Tamale, Northern Ghana

WHY

RAINS work in northern Ghana to promote an equitable society by offering a variety of services. Northern Ghana faces much higher rates of extreme poverty than other regions of Ghana, making these scholarships essential.

IMPACT FOR PARTNER

The team's financial contribution will make a significant impact on the scholarships and training that it is able to provide. The early summer team gave \$549.19, and the late summer team made a contribution of \$791.52.

MONETARY DONATION(S): \$1340.17

TOTAL: \$1340.17

TOGO-KINDER ZUKUNFTSCHANCE E.V.

The purpose of this association is to provide support to gifted children from economically disadvantaged families in Kpalimé-Togo through the mediation of sponsorships.

LOCATION

Kpalime, Plateaux Region, Togo

WHY

The contribution will go towards sponsoring the education of bright children in Kpalime to help expand their opportunities.

IMPACT FOR PARTNER

As a result of the late summer team's donation, the organization will be able to further its mission and support more bright children in Kpalime.

MONETARY DONATION(S): \$527.68

TOTAL: \$527.68

WEST AFRICA: GRASSROOTS EDUCATION

CONTINUED...

ABUNGABEY INTERNATIONAL SCHOOL

Abungabey International School is a recently established primary school in Kadema, Yaw is the principle and has been a close friend of the WAGE programs since it's inception.

LOCATION

Kadema, Ghana

WHY

Yaw has been a friend of OG for many years; and the team wanted to learn about why Yaw started a school in Kadema and support the teachers at the school.

IMPACT FOR PARTNER

The early summer team supported the teachers by providing one-on-one assistance in the classrooms and also financially contributed to the school.

DONATIONS IN KIND: \$46.88

MONETARY DONATION(S): \$183.06

TOTAL: \$229.94

SANDEMA DISABILITIES CENTRE

The Centre promotes the rights of, and empowers people with disabilities living in Sandema.

LOCATION

Sandema, Ghana

WHY

The centre supports individuals living with disabilities, and the early summer team wanted to contribute to the centre.

IMPACT FOR PARTNER

The early summer team's donation will be used to continue the operations of the centre. The group also purchased paint, which one participant used to paint a mural for a classroom.

DONATIONS IN KIND: \$11.72

MONETARY DONATION(S): \$183.06

TOTAL: \$194.78

SANDEMA OLD PRIMARY SCHOOL

This is the Primary School for children in Sandema.

LOCATION

Sandema, Ghana

WHY

The early summer team wanted to contribute to the school after their experience in Sandema.

IMPACT FOR PARTNER

The early summer group's donation was given to the school to go towards what they need most.

MONETARY DONATION(S): \$183.06

TOTAL: \$183.06

"WE MET WITH NICHOLAS THE FOUNDER OF HEPENS FOR ORIENTATION. HIS COMMITMENT, AMBITIONS, AND DRIVE TOWARD HIS PROJECTS WERE MOST CERTAINLY INSPIRING AND WE FOUND IT TO BE A GREAT MOTIVATION TO GET OUR WEEK STARTED."



WEST AFRICA: GLOBAL HEALTH

PARTNERSHIPS

HEALTH PROTECTION AND ENVIRONMENTAL SANITATION (HEPENS)

HEPENS works to make health care delivery and information accessible and affordable to all, without prejudice towards: tribe, sex, religion, disability, social economic status, or sexual orientation.

LOCATION

Cape Coast, Ghana

GOALS

Both the early and late summer teams intended to participate in education outreach projects and gain a better understanding of preventative health in Ghana, specifically through health promotion.

WHY

HEPENS is an organization doing great work in Ghana in the field of health, particularly due to their anti-oppression and anti-discrimination practices. The group had the opportunity to learn a lot from this partnership. As a result, the group wanted to contribute to the organization by volunteering and making a monetary donation.

IMPACT FOR PARTNER

The early summer team went to local schools and gave lessons on personal and dental hygiene; the team also taught older students about HIV/AIDS and STI's. The early and late summer teams also gave an informative presentation to some of the women in the community on the prevention, treatment, and symptoms of

Typhoid fever and collected data for the Palm oil Project. The data will be used to track the expansion of the project. The early summer team made a donation of \$637.50, and the late summer team contributed \$500.

IMPACT ON TEAM

Both teams were a part of many of HEPENS' community projects and were able to explore a variety of health topics through this partnership.

SPACE FOR GROWTH

This was the first year of OG's and HEPENS' partnership and the participants really enjoyed their experience. The organization is run with passion for the cause, and the staff are extremely knowledgeable. At times, the teams felt as though they could have accomplished more than the work they were assigned. This partnership should continue to be developed, and OG should ensure that the team is being used to their fullest capacity.

DONATIONS IN KIND: \$106.06

MONETARY DONATION(S): \$1137.50

TOTAL: \$1243.56

WEST AFRICA: GLOBAL HEALTH

CONTINUED...



G-ROOTS

The mission of G-Roots is to improve crop production so that farmers and their families, in the village of Kpikpaluk, Ghana, can self-sustainably produce crops.

LOCATION

Kadema

GOALS

The early and late summer teams sought to contribute to and understand the health impacts of permaculture in rural Ghana.

WHY

Since food and water can become very scarce depending on the season, small rural villages are often unable to farm. As a result, the team wanted to better understand and support permaculture in Kadema.

IMPACT FOR PARTNER

Both the early and late summer teams completed informal interviews with farmers to learn about issues surrounding food security in rural Ghana and the impact water has on the social and political dynamic of a community. The early summer group also gave a monetary donation of \$1200 to go towards the completion of the Bore Hole Project in Kadema. Water is desperately needed in Kadema, and the completion of the project will have a direct impact on farming outcomes in the community. The late summer participants gave \$1000 dollars, allocating \$200 of that amount to the completion of the borehole project.

IMPACT ON TEAM

The team found this partnership to be an extremely valuable learning experience. By speaking with community members and G-roots personnel the team began to learn more about social determinants of health.

SPACE FOR GROWTH

In the future it could be beneficial to set up a specific project for the team to complete.

MONETARY DONATION(S): \$2200.00

TOTAL: \$2200.00

WEST AFRICA: GLOBAL HEALTH

CONTINUED...

CONTRIBUTIONS

WAR MEMORIAL HOSPITAL

The maternity ward, HIV clinic, public health unit, paediatrics ward, female ward, eye clinic, and the research lab of the hospital were all involved.

LOCATION

Navrongo, Ghana

WHY

The early summer group wanted to gain a better understanding of Ghana's healthcare system and contribute to it in a meaningful way, partnering with the hospital facilitated this learning experience and contribution.

IMPACT FOR PARTNER

The team was very thankful for the hospital's willingness to host the volunteers and wanted to contribute financially to the hospital. The early summer team's donation of \$637.50 will go towards purchasing basic equipment and supplies locally. The late summer team made a financial contribution of \$1000 and requested that \$200 be given to the Social Welfare Department.

MONETARY DONATION(S): \$1637.50

TOTAL: \$1637.50

SANDEMA DISABILITIES CENTRE

The Centre promotes the rights of, and empowers people with disabilities living in Sandema.

LOCATION

Sandema, Ghana

WHY

The centre provides much needed support to individuals living with disabilities. The early summer team wanted to learn from members of the disability centre about what it means to be disabled in Ghana and the social, economic, and political impacts of being disabled in rural communities.

IMPACT FOR PARTNER

The team gave a donation towards purchasing crutches, wheelchairs, and walking sticks for community members. The funds will also go to support income-generation projects that the centre is running including chair weaving, and soap production.

MONETARY DONATION(S): \$500.00

TOTAL: \$500.00

SANDEMA DISTRICT HOSPITAL

The maternity ward, HIV clinic, public health unit, paediatrics ward, female ward, eye clinic, and the research lab of the hospital were all involved.

LOCATION

Sandema, Ghana

WHY

The team wanted to gain a better understanding of Ghana's healthcare system and contribute to it in a meaningful way, partnering with the hospital facilitated this learning experience and contribution.

IMPACT FOR PARTNER

The donation will go towards the hospital, with \$200 going specifically to the Social Welfare Department.

MONETARY DONATION(S): \$1000

TOTAL: \$1000

KAYAYEI YOUTH ASSOCIATION

Kayayei Youth Association is a non-profit working in Old Fadama that aims to provide the necessary resources for the safety and well-being of Kayayeis. Kayayei is the name for women who work in markets as porters.

LOCATION

Old Fadama, Accra

WHY

The late summer team learnt about social determinants of health, as they were exemplified by the stories of the Kayayei women. The association also focuses on providing family planning and income generating projects to Kayayei women in order to provide a safe atmosphere for them in Old Fadama.

IMPACT FOR PARTNER

The late summer team's financial contribution will go to support the Groundnut Paste Income Generation Project for Kayayei Women.

MONETARY DONATION(S): \$1430.00

TOTAL: \$1430.00

WEST AFRICA: GLOBAL HEALTH

CONTINUED...

KORLE BU TEACHING HOSPITAL

Korle Bu is the largest teaching hospital in West Africa and the third largest in all of Africa.

LOCATION

Accra, Ghana

WHY

Since Korle Bu is the largest teaching hospital in West Africa and the third largest in all of Africa. The hospital was able to help the late summer team understand the basics of general healthcare provision in Ghana.

IMPACT FOR PARTNER

The late summer team's donation will be split between the Public Relations Department and the Social Welfare Departments.

MONETARY DONATION(S): \$109.72

TOTAL: \$109.72

ABUNGABEY INTERNATIONAL SCHOOL

Abungabey International School is a recently established primary school in Kadema, Yaw is the principle and has been a close friend of the WAGH programs since it's inception.

LOCATION

Kadema, Ghana

WHY

The group did not participate in programming at Yaw's school, but decided that they wanted to contribute financially to support the new primary school.

IMPACT FOR PARTNER

Currently the teachers are volunteering their time; the late summer team's donation will give two teachers a personal stipend and will also go towards school supplies.

MONETARY DONATION(S): \$500.00

TOTAL: \$500.00

CANDLE LIGHT

Candle Light is an organization that works to empower students in the Upper East Region to pursue higher education.

LOCATION

Sandema, Upper East Region, Ghana

WHY

The team was inspired by the support Candle Light provides to students through conferences and sponsorship, and the team wanted to contribute to their work.

IMPACT FOR PARTNER

Candle Light received a financial contribution that will help finance their next regional conference.

MONETARY DONATION(S): \$150.00

TOTAL: \$150.00



THE PROJECT FUND

EAST AFRICA: DISCOVERY

Early Summer: \$99.30

Late Summer: \$188.80

EAST AFRICA: YOUTH IN ACTION

Early Summer: \$271.75

Late Summer: \$1014.50

GUATEMALA: FAIR TRADE

Early Summer: \$900.00

GUATEMALA: EXTREME

Late Summer: \$900.00

INDIA: GENDER AND RELIGION

Early Summer: \$507.68

INDIA: HIGH ALTITUDE EDUCATION

Late Summer: \$56.42

MIDDLE EAST: BEHIND THE HEADLINES

Early Summer: \$27.07

Late Summer: \$1181.20

PERU: AMAZON ADVENTURE

Early Summer: \$970.34

Late Summer: \$47.18

PERU: MIND AND BODY

Early Summer: \$1698.67

Late Summer: \$1104.96

SOUTHEAST ASIA: ANIMAL CONSERVATION

Early Summer: \$9.38

Late Summer: \$6.08

SOUTHEAST ASIA: CITIES AND SANCTUARIES

Early Summer: \$115.66

Late Summer: \$567.98

WEST AFRICA: GRASSROOTS EDUCATION

Early Summer: \$542.27

Late Summer: \$513.84

WEST AFRICA: GLOBAL HEALTH

Early Summer: \$300.00

Late Summer: \$1573.82

